

# TIPS TRICKS<sup>AND</sup> HOW TO...

For Students

## Install & Enable Java

*Note: You will need to have Java enabled in order for WebCT to work properly.*

### Installing Java

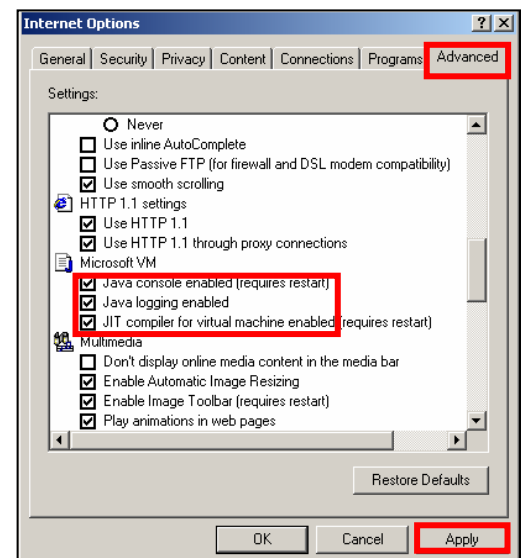
1. First test your browser to see if java is installed. Click [here](#) to test. If you see the magic cube game, you have java installed.
2. If you do not see the game, you can download Java from [java.com](#).
3. After you have installed the java plug-in, test again to see if you can load the magic cube java applet. Click [here](#) to test.

### Enabling Java Netscape 4.5 or Higher

1. Open your Netscape browser
2. Under Edit choose **Preferences**
3. Select **Advanced**
4. Make sure that **Enable Java** and **Enable JavaScript** are selected
5. Click **OK**

### Enabling Java for Internet Explorer 4.0 or Higher

1. Choose Preferences, which on a PC may be located under the **Tools** menu (or in Mac OSX it is under **Explorer**).
2. Select **Advanced** (or **Web Browsing** for Mac OSX).
3. Select the boxes that say **Java Console Enabled** and **Java Logging Enabled**.
4. Click **Apply** and then **OK**.
5. Restart your computer (required).



# FACT